

Nearby transport options

By bus

- Line 41 Gournay-en-Bray > Beauvais**
- > 2 stops in Lachapelle-aux-Pots (railway station and post office)
 - > 3 stops in Saint-Paul (amusement park, la planche and l'Avelon).

Find all of this information at www.oise-mobilite.fr



Car parks

- Lachapelle-aux-Pots**
- > Town hall
 - > Parking along the greenway, opposite the former railway station
- Saint-Paul**
- > Parc Saint-Paul amusement park
 - > Intermarché supermarket

Shop renting & repairing bikes

- Beauvélo**
- Rentals and repairs. Rental bike service available within 30 km from Beauvais.
- 📍 Vélostation, ancien Buffet de la gare SNCF 60000 Beauvais
 - ☎ 03 60 29 55 35
 - 🌐 beauvelo.org

Restaurant

- > Le Marcel
- 📍 40 rue de l'Abbaye 60650 Saint-Paul
 - ☎ 03 44 79 37 27

Tourist offices

- Office de tourisme Intercommunal du Pays de Bray**
- 📍 11 place de Verdun 60850 Saint-Germer-de-Fly
 - ☎ 03 44 82 62 74 / 03 44 82 23 56
 - 🌐 www.ot-paysdebray.fr

Tips & recommendations

- > Best not to cycle the entire itinerary all in one go.
- > Check the weather prior to starting
- > Don't forget to bring food and water
- > Heading out early allows you to make the most of your day, with room for manoeuvre should the need arise
- > - Traffic rules and regulations also apply to bicyclists. Respect all road signs and keep right (in France), for the route is frequented by users travelling in both directions.



Accommodations

- Saint-léger-en-Bray**
- > Cottage Nature
 - 📍 1 grande rue 60155 Saint-Léger-en-Bray
 - ☎ 03 44 47 67 17
 - > Maison des Randonneurs
 - 📍 2 rue de Rainvillers 60155 Saint-Léger-en-Bray
 - ☎ 03 44 47 67 17
 - > Le Colombier
 - 📍 1 grande rue RD98/Bus-Gisors 60155 Saint-Léger-en-Bray
 - ☎ 03 44 47 67 17



In the event of an emergency

- > SAMU (urgent medical assistance) **15**
- > Police assistance **17**
- > Fire department **18**
- > Emergency/casualty department **112**



Roadbook #2 Lachapelle-aux-Pots > Saint-Paul on the Avenue Verte London-Paris

14,6 km round trip

This roadbook is recommended for families.*



Itinerary Lachapelle-aux-Pots > Saint-Paul



GPS coordinates

> 1,89893435 ; 49,4441866

Level*

● very easy

* DGE cotation Direction Générale des Entreprises

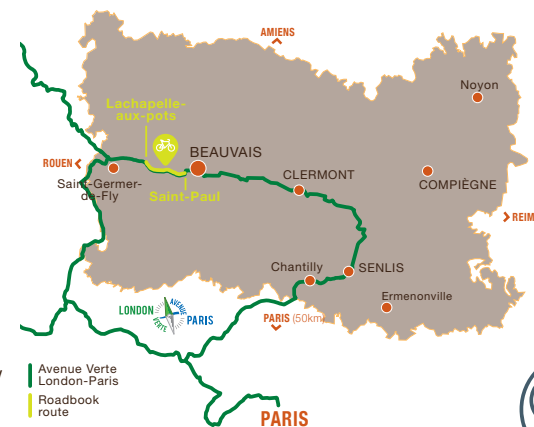
Route time

- > 50 min for the direct route
- > 1h10 with a 15-min break every 2 hour.

Touring time

Full day including the suggested visits/tours.

📍 IGN topographical map reference code : 2211O / 2211E



Product offered by the Oise Tourist Board, in partnership with:



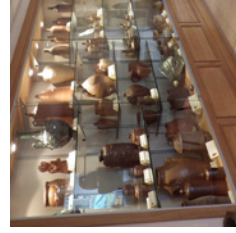
Lachapelle-aux-Pots > Saint-Paul



☆ Point of interest, description attached

While biking along, don't hesitate to stop, explore and have fun.

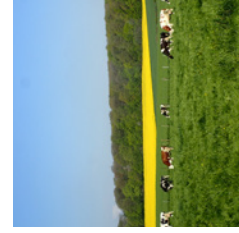
☆ **Start** Lachapelle-aux-Pots former railway station



☆ **Pottery Museum**

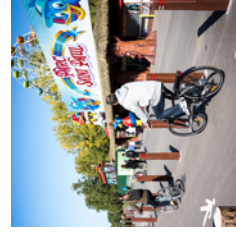
This dynamic museum relates the tradition of Bray pottery with a collection of over 300 pieces, both everyday stoneware and sublime works by such famous local ceramists as Auguste Delaherche, Pierre Pissareff and André Bouché. The museum offers guided group tours (reservations required), as well as pottery demonstrations and lessons for both children and adults.

📍 17 avenue Tristan Klingsor 60650 Lachapelle-aux-Pots
📞 03 44 04 50 72 - 03 44 04 50 71



☆ **The Pays de Bray valley**

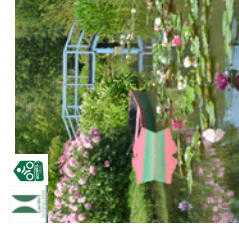
All along the greenway, discover the bucolic landscapes of the Pays de Bray.



☆ **The Parc Saint-Paul amusement park**

Parc Saint-Paul is a family-friendly amusement park in the heart of the French countryside, with 40 fun attractions. Experience thrilling adventures as a family and forge unforgettable memories! Three live daily shows guarantee an out-of-the-ordinary day.

📍 Route Départementale 931 60650 Saint-Paul
📞 www.parcstpaul.fr
📞 03 44 82 20 16



☆ **The painter André Van Beek's garden**
A garden for the painting of pictures, designed around views and colours, playing upon sunlight and the morning mist. The garden is comprised of long-blooming flowers, with water lilies adorning the pond and bank plants lending unity to the whole.

📍 1 rue des Auges, 60650 Saint-Paul
📞 www.andrevanbeek.com 📞 03 44 82 20 18



☆ **Saint-Paul**

Admire (from the outside only) the 12th-century church. Saint-Paul also boasts an old abbey (today a private estate) originally founded by the royal crown and which survived particularly tumultuous periods during the 13th and 15th centuries before its destruction during the French Revolution. In the village, you can also discover the Hostellerie des Dames dating from 1433. Saint-Paul was also a cradle of earthenware production; from 1807 to 1849, the old royal abbey housed the first factory of the Beauvaisis to manufacture stanniferous ceramic tiles in the northern style.

☆ **Finish** Parc Saint-Paul amusement park

☆ **The Ferme de la Vieille Rue farm Armentières**

Bruno and Alexandre's farm in the hamlet of Armentières outside Lachapelle-aux-Pots is home to 60 Montbéliard milk cows, for the production of such delicious dairy products as tomme cheese, crème fraîche, fruity yoghurts, fromage frais, fromage blanc and of course fresh milk. Stop by their boutique and savour the authentic flavours of their beloved Pays de Bray!

📍 facebook.com/producteurlaitier.gaeccdelavieilleue60
📞 06 16 06 65 56 / 03 44 04 82 15

☆ **The Armentières wash house**

Not far from the Vieille Rue farm, in the hamlet of Armentières, discover the village's old wash house.